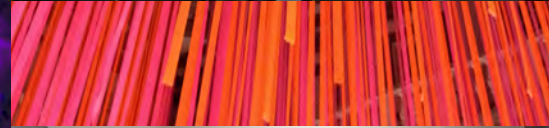


# ASID PA WEST NEWSFLASH

OFFICIAL MAGAZINE OF THE ASID PA WEST CHAPTER

QUARTER 1 OF 2014-2015



INTERIOR DESIGN



# ASID PA WEST NEWSFLASH

## 2014-2015 BOARD MEMBERS

### President

Windy J. Neff, ASID, NCIDQ

### President-Elect

Brian Fee, Allied ASID

### Financial Director

Vicci Franz, ASID, NCIDQ

### Communications Director

Tom Gillen, Industry Partner

### Professional Development Director

Kelsey Ziegler, Allied ASID

### Director At-Large

Margaret Ringel Baker, ASID, RA

### Membership Director

Nancy Sakino Spears, Allied ASID

### Student Rep to the Board

Chelsey Atkins, Student ASID

### Chapter Administrator

Lisa Blose

asidpawest@gmail.com

412.882.4424

Office Hours:

8:30 am-11:30 am Tues-Thurs

### Magazine Designed and Edited by:

Kelsey Landis, Allied ASID

Windy J. Neff, ASID, NCIDQ

## LETTER FROM THE PRESIDENT

## [table of contents]

### Features + Cover Stories

- 10 ONLINE RESOURCES FOR CEU'S
- 14 ASID ADVANTAGE

### Events

- 5 PARTNER PROGRAM DEBUT
- 12 CHILDREN'S MUSEUM BEHIND THE SCENES TOUR
- 16 11th ANNUAL HOLIDAY LUNCHEON
- 19 EP & MEMBERSHIP HAPPY HOUR
- 20 FALL SCHOOL VISITS

### In Every Issue

- 3 LETTER FROM THE PRESIDENT
- 6 MEMBER UPDATES
- 9 CALENDAR OF EVENTS

## Welcome to our Quarterly Magazine



Many of our members may not be aware that our chapter has undergone a huge change in how we look for sponsorship. The chapter rolled out a new Partner Program that has actually been part of a wish list of ours for a few years now. With the hard work of our committee we rolled out this program to our Industry Professional members and friends in September at a special event at Don's Appliance.

Through the help of our partner sponsors we will be able to continue to host wonderful events such as our Holiday Luncheon, which again was a sold out event, a Day of CEU's, Building Tours, our Trade Show, Career Day, Student Visits and events, Emerging Professional & Membership Happy Hour events at local showrooms, and much more. We are also guaranteed to be able to send our board for FY16 to Boston for Chapter Leadership Conference in July.

The roll out of this new program was challenging for us; however it has proven to work for us. We have gotten a wonderful response and we encourage each of our members to look at our sponsors first when specifying for projects because they are supporting you in ASID. The full list of our sponsors is on the next page. Please, remember to tell your sales representatives thank you for supporting ASID to allow us to continue to offer wonderful events.

I look forward to serving this great chapter and design community.

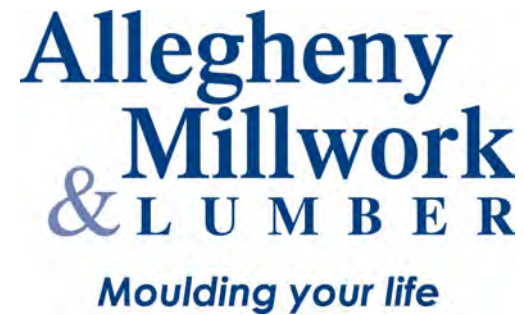
A handwritten signature in black ink that reads "Windy J. Neff". The signature is fluid and cursive.

**WINDY J. NEFF, ASID, NCIDQ**  
president

# PARTNER SPONSORS 2014-2015



## PLATINUM PARTNERS



## GOLD PARTNERS



## SILVER PARTNERS



## BRONZE PARTNERS



# Partner Sponsor Debut

On Tuesday, September 9, 2014 ASID PA West invited IP members and interested industry professionals for complimentary drinks and hors d'oeuvres. The location was Don's Appliance in Shadyside. We gathered everyone to debut our new Partner Sponsor Program.

The event was a complete success and it was wonderful to talk to so many Industry Professionals some who have supported us through decades and some brand new. It is only with the ongoing support of our Industry Professionals such that we are able to have such wonderful events within our chapter.

Please support our IP members and our Partner Sponsors, as they are supporting you!



ADVERTISE YOUR COMPANY OR WORK HERE!! FOR MORE INFORMATION CONTACT ASID PA WEST AT [asidpawest@gmail.com](mailto:asidpawest@gmail.com)

## call for photos

We'd like to feature your work throughout the ASID PA West website, and in various communications, to illustrate the well-designed spaces that our members create and share them with the public. We invite all of our members to participate in this call for photos and ask you to consider submitting high-resolution color images of the spaces that you've created. Contact Chapter Admin. for additional information.



# Member Updates

**Tom Gillen**, Manager of Allegheny Millwork & Lumber and ASID Communications Director was awarded the 2014 Associate of the Year award by the Builders Association of Metropolitan Pittsburgh on Saturday, Dec. 13, 2014. This honor was bestowed for diligent and dedicated service to the Industry and the Builders Association of Metropolitan Pittsburgh. This award is given out yearly by the President of the Association and it's Tom's second time capturing this coveted and prestigious award. Tom has been on the Builders Association's Board of Directors for 6 years and has served on the Executive Committee for 2 years.

**Megan Carelton**, ASID of Kelly Custom Furniture in Lawrenceville, passed her NCIDQ in September. This is a great accomplishment and we welcome Megan as a new Professional member of ASID.

**Tom Gillen**, General Manager of Allegheny Millwork & Lumber celebrated his 25th Anniversary with the company on Dec. 4th. He was hired at the lumberyard in 1989 in Sales and within 4 short years was promoted to General Manager in 1993. With the help of his fantastic sales staff and yard crew, Allegheny Millwork has become a successful business outliving many of its competitors. Tom's view on growing the business includes ever evolving and changing to fit his customers' needs; as times change so does inventory and service. Tom was presented with a plaque to acknowledge his accomplishments and thank him for his dedication throughout the year's. The time and actual love he puts into his work shows by the success of the business!

**Caroline Vranesevic**, Allied ASID has just taken a new position with Ae7 Pittsburgh office as a Graduate Interior Designer. She is currently the chair of the Community Service Committee for ASID.

**Kelsey (Landis) Ziegler**, Allied ASID was married to her best friend Joseph Ziegler on November 8, 2014 in Pittsburgh, PA. Kelsey is a designer at Stantec and the Professional Development Director for the PA West Chapter of ASID. We wish her a lifetime of happiness.

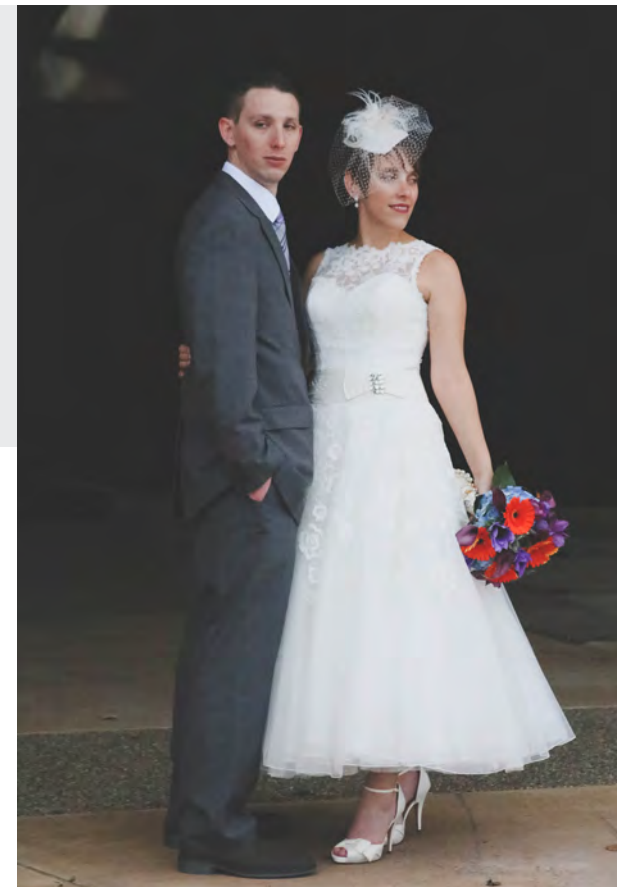
**Chelsey Atkins** graduated from the Art Institute of Pittsburgh winning Best In Show for Interior Design at the Portfolio Show. Also, Chelsey will be taking her internship at Strada Architecture LLC and turning into a full time Interior Design position. Chelsey is currently serving as the Student Representative to the Board for ASID. She is also a LEED Green Associate and a member of IIDA.

**Kayla (Benton) Miller**, Allied ASID was married on October 4, 2014 to Eric Miller in Elizabethtown, PA. Kayla has also recently started working at Don's Appliance. She currently is the Chair of the Professional Development Committee. We wish her a lifetime of happiness.

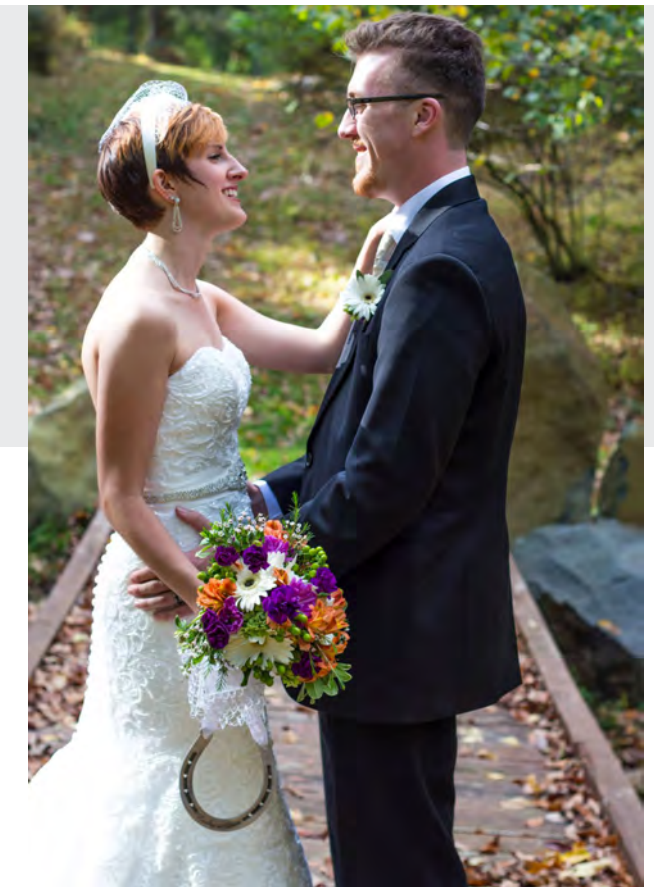
Vicci Franz Interior Design, LLC has been selected as the official Interior Design Firm | Project Partner for Pittsburgh Magazine's Ultimate House 2015. **Vicci Franz, ASID, NCIDQ, BSID** is the President of Vicci Franz Interior Design, LLC and current Financial Director for the PA West Chapter of ASID. See more about the house on Pittsburgh Magazine's Website, Ultimate House 2015. You will be able to see the house first hand when it is open for tours September of 2015.



Vicci Franz, President of Vicci Franz Interior Design, LLC



Kelsey & Joseph Ziegler married Nov. 8, 2014



Kayla & Eric Miller married October 4, 2015



Tom Gillen celebrated 25 years of service at Allegheny Millwork & Lumber



Tom Gillen awarded 2014 Associate of the Year by Builders Association

## call for member updates

*If you would like your news shared with our members please send information and a picture if you'd like it included to our administrator [asidpawest@gmail.com](mailto:asidpawest@gmail.com).*

# EXPANDING YOUR KNOWLEDGE:

A DAY OF CONTINUING EDUCATION  
www.asidpawest.org

# [calendar of events]

*upcoming events for 2015...*

## THURSDAY, FEBRUARY 26, 2015

### EVENT SCHEDULE

<b>9:00am - 9:30am</b>	REGISTRATION & BREAKFAST
<b>9:45am - 10:45am</b>	SUSTAINABLE KITCHEN & BATH DESIGN
<b>11:00am - 12:00pm</b>	WORKPLACE WELLBEING
<b>12:15pm - 1:15pm</b>	LIGHTING & THE COLLABORATIVE WORK PLACE
<b>1:30pm - 2:30pm</b>	LUNCH & VENDOR DISPLAY
<b>2:45pm - 3:45pm</b>	CARPET DIEM III
<b>4:00pm - 5:00pm</b>	SURFACE SOLUTIONS: UNDERSTANDING THE MATERIAL WORLD
<b>5:15pm - 6:15pm</b>	UNDERSTANDING QUARTZ SURFACING MATERIALS
<b>6:30pm</b>	COCKTAILS, NETWORKING, & TOUR

### EVENT COST

\$60 ASID FULL DAY/ \$85 NON- MEMBERS FULL DAY  
 \$40 ASID HALF DAY/ \$60 NON-MEMBERS HALF DAY  
 FREE FOR STUDENTS THAT RSVP BY FEB 19<sup>TH</sup>  
 \$15 ASID A LA CART/ \$25 NON-MEMBERS A LA CART  
 \$25 WALK-IN PER COURSE (cash or check payable to ASID PA WEST)  
 \$10 COCKTAILS, NETWORKING, & TOUR OF FACILITY

### RSVP- THURSDAY FEBRUARY, 19TH

REGISTRATION & PAYMENT TO:  
<http://asidpawestfebruary26dayofceus.eventbrite.com>

### LOCATION

**VANGURA SURFACING PRODUCTS**  
 14431 Vangura Lane  
 North Huntingdon PA, 15642  
 P: 412-824-7777  
 W: www.vangura.com  
 PARKING PROVIDED AT VANGURA

### THANK YOU TO OUR EVENT SPONSOR



### THANK YOU TO OUR CEU SPONSORS



### Day of CEU's

February 26, 2015  
 Location: Vangura Surfacing, North Huntingdon, PA  
 Come join ASID PA West for a day of CEU's. Registration and breakfast begin at 9:00 am with our first CEU starting at 9:45. There will be a total of 6 IDCEC accredited CEU's and several will also be AIA and GBCI.

### IOA Healthcare CEU

March 26, 2015  
 Location: Phipps Conservatory  
 Come join ASID PA West and IOA Healthcare for a CEU presented by Roz Cama entitled "The Power of Touch in a Healing Environment."

### Building Tour of Braddock Library

April 2015  
 Location: Braddock Library  
 Come join ASID PA West as we tour the historic Braddock Library and learn about the steps in preserving the incredible piece of architecture.

### Emerging Professionals & Membership Happy Hour

May 2015  
 Location: Franklin Interiors Showroom  
 Free to students, members and non-members

### Tour of the Sheraton Hotel

May 2015  
 Location: Erie, PA

### Annual Meeting

September 2015  
 Location: Pittsburgh, PA

### Bi-Annual Trade Show & Student Career Day

September 24, 2015  
 Location: Heinz History Center  
 Come join ASID PA West to view the latest products available by our wonderful IP Members in the community, attend CEU's and our Annual Students Career Day.

*Calendar subject to change. Invitations for each event will be in our Eblast when available.*

# ONLINE

## RESOURCES FOR CEU'S

By Lori Claus, ASID, NCIDQ

As practicing members of ASID, we are required to take continuing education courses; this includes every ASID member in the Allied, Professional and Associate Membership categories. The current policy, set forth by National, mandates that each practitioner must successfully complete at least 1.0 Continuing Education Units (CEUs) that are equal to 10 contact hours of approved continuing education coursework, during each two year reporting period.

In addition, I am also a LEED AP professional and must report Continuing Education (CEs) every two years to maintain my credentials; these CE hours are calculated differently, depending on the activity. As a LEED AP, I must earn 30 CE hours (six must be LEED specific) whereas the LEED Green Associates are required to earn 15 CE hours (three must be LEED specific) within the two year period.

Two years sounds like enough time to report hours for these activities but it does pass by quickly. Before I knew it, I was close to the end of my reporting period and at a loss on where to find activities that would satisfy certain CE requirements. Attending the annual Day of CEU's and other opportunities that our local ASID chapter offers will get me about a third of the way towards my goal but I have found it beneficial to reach out to on-line resources, especially when time is of the essence! Below is a list of websites that you can peruse at your leisure and select the courses that may appeal to your interest, as well as satisfy some of the LEED CI requirements.

### GreenCE, Inc: <http://greence.com/> "Sustainable Design Continuing Education"

Website requires you to create an account so that you can login and take exams, as well as track the courses that you have completed. A certificate of completion is emailed to you after passing each course. This website offers free courses, paid courses and webinars in order to fulfill your CE/CEU requirements.

### AEC Daily: <http://www.aecdaily.com/> "Building Knowledge and Connections"

Website provides a nice overview of CEU courses available in specific Masterformat Specification categories, as well as those specifically geared to Sustainable Design and provide CI credits. This resource offers courses that you can download (for a fee) as well as locations for "live sessions" that are offered throughout the United States. If you create an account, the site also tracks your courses completed to date.

### Ron Blank and Associates, Inc: <http://www.ronblank.com/> "Bridging the Gap between Design Professionals and Product Manufacturers"

Similar to AEC, this website also provides an overview of available courses in the Masterformat system; click "Quick List" to get a concise overview of all the available courses. This website also offers courses geared specifically to accessibility as well. You need to create an account and take a quick quiz at the conclusion of the course in order to earn credit. RBA reports all credits to the AIA and provides you with a Certificate of Completion for your records. Several free webinars are featured each month as well. All online courses are also tablet friendly as well, no Apps required.

### Sustainable Furnishings Council: <http://www.sustainablefurnishings.org/> "Promoting Healthy Environments Inside & Outside"

The Mission of the Sustainable Furnishings Council is "an educational and marketing organization, promoting healthy environments, inside and outside. A balanced coalition of industry players, SFC was founded at High Point, NC in October 2006 to promote sustainable practices among manufacturers, retailers, and consumers alike." By joining their mailing list, they will email you opportunities to participate in free webinars.

Before I get into the details regarding some of these on-line resources, I also encourage you to look towards some opportunities offered through our local Industry Partners. Crescent Supply and Allegheny Millwork are examples of two of our IP Members that offer CEU's to the architectural-design community. Allegheny Millwork's website (<http://www.alleghenymillworklumber.com/>) lists the monthly CEU's that they offer. To my knowledge, all of these CEU's are AiA approved as well.

The local Green Building Alliance's website (located at: <https://www.go-gba.org/>) also provides many opportunities for seminars, volunteering, brown bag lunch discussions at their Southside office and building tours that provide the necessary CE credits for LEED professionals. Most of these offerings are available at a discounted rate to members or are free, the current going rate to join on an annual basis is \$75 and Emerging Professionals are eligible for a \$35 membership rate. (I have determined that the membership rate pays for itself when you participate in the offerings geared towards CE credits.)

Remember, it is the responsibility of each ASID practitioner member to maintain personal files documenting successful completion of continuing education coursework. National's website suggests that the documentation/file for each course or program should be kept for four years from the date of course completion. It is possible that you may be selected for an audit in which case, you must present ASID with your verification of attendance or the completion certificate for all coursework.



To Advertise in the Newsflash please contact our Administrator Lisa Blose [asidpawest@gmail.com](mailto:asidpawest@gmail.com)

Size	Width	Height	Member Cost	Non-Member Cost	Member Cost x4	Non-Member Cost x4
Full Page	7 3/4"	10 1/8"	\$200	\$250	\$800	\$1000
1/2 Page	7 3/4"	5"	\$100	\$125	\$400	\$500
1/4 Page	3 3/4"	5"	\$50	\$65	\$200	\$260
1/2 Column	2 1/4"	5"	\$25	\$35	\$100	\$140
Business Card	3 1/2"	2 1/4"	\$15	\$20	\$60	\$80

# CHILDREN'S MUSEUM

## behind the scenes tour

by: Kelsey Ziegler, Allied ASID  
Professional Development Director

On Friday, October 17th after the Children's Museum had closed its doors to the general public ASID members and non-members got a special sneak peek at the behind the scenes works of the Children's Museum of Pittsburgh. The event started with a special networking hour with food and beverages in the museum Garage Exhibit. The Garage Exhibit is a permanent exhibit at the museum and contains a smart car, the trolley from Mr. Roger's Neighborhood, a race track, a jungle gym, along with several other items that are typically found in garages. Not only did we get to experience the exhibit by looking at it, but many of the members and friends of ASID were able to bring out their inner child and experience the exhibit first hand either by climbing the net to the top of the jungle gym, sitting in Mr. Rogers' Trolley, or even crawling inside a large tire from a truck.

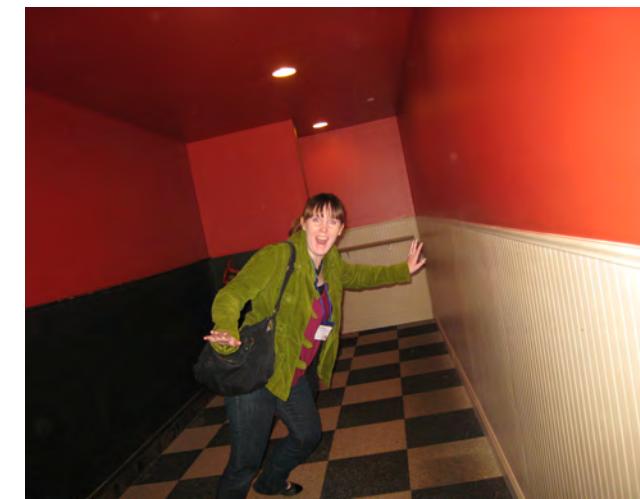


Once all those in attendance had a chance to grab some food and network with one another they were led on a private tour through the rest of the museum by a member of the design team from Children's Museum of Pittsburgh.

The tours started in the garage where Anne, a member of the design team at the museum, started with the history of the museum along with the history of the buildings housing the museum. The Children's Museum is made of 3 buildings all joined together, the old Post Office and the old Buhl Planetarium which are connected by a newer building to form the museum.



The tour then took us through each exhibit including Bounce!, the Attic, the MAKESHOP, Nursery, Studio, and Waterplay with the tour ending in the Theater. At each exhibit we would stop and Anne would explain the thought process behind the design of each exhibit and how the exhibit came to life. Then those in attendance would get time to bring out their inner child and experience the exhibit. While in the Attic Exhibit everyone got their turn to walk through the



gravity room in which the floor is tilted at a 25 degree angle (it can definitely make your brain go a bit crazy) which was followed by a trip down a twisty slide. In the Nursery, those in attendance had the chance to write a message in the sand on a light up board or make an image on the giant Light Wall and spin the 7' in diameter Water Mover to make water in the Waterplay Exhibit. Each exhibit contained an interesting story in the design process and a different experience that let out the child in us all.

The evening was full of history, environmental design processes, and lots of laughter and smiles. It was truly a great opportunity to experience the inner workings of the Children's Museum of Pittsburgh and get a behind the scenes look at how design contributes to the operation of the museum. We would like to extend a great big thank you to our sponsors for this event Cambria and Patcraft. We would also like to send a thank you to our amazing tour guide Anne and the entire Children's Museum of Pittsburgh for cracking open their doors and allowing us the opportunity for a behind the scenes tour of the museum it was truly a fabulous event!

Chair Kendall Curtis and Co-Chair Nancy Drew truly allowed us all to feel like children again for an evening!



# [ASID ADVANTAGE]

By Vicci Franz, ASID, NCIDQ

ASID National announced **ASID Advantage**, a program highlighting Rewards Purchasing/Contracts/Discounts/Insurance to members in October through the **Business of Design Week**.

With a new rewards purchasing program, a new strategic business curriculum, custom insurance policies and updated residential contracts, ASID has thoroughly refreshed the ASID Advantage portfolio. While some of these programs also are available to non-members, ASID members receive significant discounts and previews of updates to the offerings.

## ONEPOINT

The OnePoint Business Purchasing Program enhances and supports the purchasing needs of small businesses, associations and their members' businesses. OnePoint helps maximize business savings by leveraging the concentrated buying power of its members while providing access to vendors guaranteed to offer great value and significant savings. In addition to great savings, participants can earn points to redeem for incredible rewards for their business, employees, families, and for themselves. For more information visit: [asid.onepointpurchasing.com](http://asid.onepointpurchasing.com).

## ASID Form Contracts

ASID encourages all designers to enter into written agreements with clients. For more than 20 years, ASID has provided members with residential form contracts that serve as a framework from which members and their local attorneys can create client agreements. ASID has updated and refreshed its residential form contracts. More information on the new documents can be found at [www.asid.org/contracts](http://www.asid.org/contracts).

## Reduced Prices on Design Tools

ASID announces special ASID member discounts at Williams Sonoma, Inc. To the Trade as well as Contract and Metropolis Magazine subscriptions. To take advantage of the discounts please visit [www.asid.org/advantage/reduced-prices](http://www.asid.org/advantage/reduced-prices).

## The Insurance Exchange

ASID and The Insurance Exchange Inc. have joined forces to offer the premier insurance program designed specifically for interior designers. Visit [www.asid.org/insurance](http://www.asid.org/insurance) to learn about better insurance offerings for ASID members, which include:

- New business owners' insurance
- Healthcare coverage for you and your employees
- Disability insurance
- Personal insurance for your home and auto

## ASID Small Business Fundamental Curriculum

On the business acumen side of your operation, ASID has partnered with Steve Nobel to create a custom Business Strategy Curriculum, which will feature four interactive Web presentations constructed collectively to build business practice knowledge. A free preview of this curriculum is available at [asid.org/businessstrategies](http://asid.org/businessstrategies). The full curriculum consists of four course modules:

**Course 1:** Setting Your Intentions explores principles that support successful interior design practices. This course will get you thinking systematically about what you want from your business and help you start to develop your business plan. *(Check your ICON Winter 14 on page 43 for a promo code to register free for this first module.)*

**Course 2:** Attracting Clients looks at the market for interior design, in particular affluent clients. You will learn effective ways to position yourself, connect with them, and develop proposals that will get you hired by affluent clients.

**Course 3:** Managing Projects explores how you can create a culture of creativity for yourself, your employees, and contractors. The course also covers how to manage budgets, schedules and business issues throughout a project — from design to installation.

**Course 4:** Sustaining Your Practice covers how to sustain the financial performance of your practice, celebrate successful projects, and maintain long-term client relationships to develop future business.



# kicking off the Holiday Season

## with the 11th Annual Holiday Luncheon

By: Ashley Mikulan, Professional Development Committee Member  
 Kelsey Ziegler, Professional Development Director



"The ASID Holiday Luncheon ... is one of the nicest Holiday events that I've ever attended."

**Dorothy Moyta, RA**  
 Design Interior Architect  
 MDM LLC



On Friday December 5th 2014, ASID PA West held their 11th Annual Holiday Luncheon at the Duquesne Club. This event has quickly become the most attend event of the year in the local design community with over 220 interior designers, architects, manufactures' reps, and students in attendance. It is a perfect event for networking, honoring those in our community who have made significant contributions to promote interior design, and kicks off the holiday season.

This year's Annual Holiday Luncheon began with the current ASID PA West President Windy J. Neff giving a brief update of the chapter and introducing the current chapter board, as well as thanked the outgoing board members. She also spent time thanking our generous chapter sponsors. Once Windy completed her introduction, Past-President, Nancy Hoff Barsotti came to the podium to say a few words and introduced a moment of silence in memory of Jane Bowers, our recently deceased member. Jane was loved by all, she was an extremely involved member of ASID, and was passionate about the local chapter. She was not afraid to make phone calls and reach out to members to encourage them to attend events and meet other members within the chapter. She will be missed dearly.

Every year, at the Annual Holiday Luncheon, ASID PA West confers the ASID PA West Chapter Leadership Award. This award is bestowed upon a regional community member and/or organization that have made significant contributions of knowledge, education and ongoing efforts to promote design in the Western Pennsylvania region. This year, three

educators from local colleges and universities within our chapter were awarded this prestigious honor. Stephanie Heher, Mercyhurst University, Lisa Kamphaus, La Roche College and Lisa Whitney, the Art Institute of Pittsburgh deserved this award due to their contributions to promoting the Interior Design profession and the importance of community service to their students.

This year's event wrapped up with the announcement of the Holiday Auction winners. This year's action was run by Nancy Drew and Kayla Benton-Miller who secured 33 unique items, graciously donated by several companies and individuals within the community, valued over \$10,000. Some of the standout auction items donated were the Pittsburgh Sporting tickets, Wine baskets, Holiday Wrapping Basket, Private Tour at Fallingwater and some furniture pieces to name a few. Congratulations to all the winners of this year's fabulous auction items.

Everyone who attended this year's event had a great time!

A special thank you to the luncheon committee chairs Beth Yocum, Ashley Mikulan, Kelsey Ziegler, Nancy Drew, and Kayla Benton-Miller. Another special thank you needs to be given to the event sponsors, OfficeMax Workplace Interiors, Corbett-KI Furniture, and Tandus-Centiva. OfficeMax Workplace Interior has become our signature room, bar, and printing sponsor. Corbett- KI was this year's gift sponsor, and Tandus-Centiva was the decorations sponsor.

# Event Sponsors

---

Room, Bar & Print Sponsor



Gift Sponsor



Decorations Sponsor



# Holiday Auction Donors

---

- |   |                                  |
|---|----------------------------------|
| Allegheny Millwork & Lumber             | Forms+Surfaces                   |
| Architectural Clay Products             | Franklin Interiors               |
| Art Institute of Pittsburgh             | Heidi Von Updegraff              |
| Barsotti Interior Design/Nancy Barsotti | Housetrends                      |
| Benjamin Moore & Co                     | Karndean Design Flooring         |
| Black Lamb Galleries                    | KMA & Associates                 |
| Bulldog/HON/Kimball                     | Kolano Design                    |
| Caldwell's Window Ware Inc.             | Koroseal Interior Products Group |
| Corporate Art                           | Lotenero Studio                  |
| Dan Binford and Associates              | Mont Granite                     |
| Dente Pittsburgh, Inc.                  | National Office Furniture        |
| Distinctly U/ Contractor Supply         | Pittsburgh Magazine              |
| DL Couch                                | PPG Voice of Color               |
| Drew Designs Ltd.                       | Shaw Contract Group              |
| Don's Appliances                        | Vangura                          |
| Eisaman Contract & Associates           | Wendy Osbourne                   |

# Luncheon Committee Chairs

---

- |                |                |                     |
|----------------|----------------|---------------------|
| Ashley Mikulan | Kelsey Ziegler | Kayla Benton-Miller |
| Beth Yocum     | Nancy Drew     |                     |

# *emerging professional and membership* HAPPY HOUR

By: Nicole Santella, Membership Committee Member

On November 7, 2014 my partners and I at Artemis Construction & Design kicked off a new series of membership events with ASID PA West, by hosting a Emerging Professional and Membership Happy Hour at our Lawrenceville showroom.

We enjoyed a wonderful evening of good food, drinks and company. It was our way of thanking ASID, and a variety of our colleagues, for their continued support throughout the year! We also wanted to familiarize emerging professionals with the breadth of both Artemis' products and services, and the artisan methods that we utilize in each of our unique projects, to strike the ever-delicate balance between creativity and construction.

Donations were collected for LifeSpan, who offers resources, programs and services that promote healthy and dignified aging.

A giant thank you to "Lucky " with Maggies Farm, Cafe Raymond, and Allison McGeary (Florist) for helping make the event a huge success!



# FALL VISITS TO SCHOOLS

This fall the PA West Chapter of ASID visited five student chapters and conducted a virtual membership drive for the Art Institute of Pittsburgh Online Division.

Most of the visits consisted of an introduction to the Professional Members who attended, the local student board and a PowerPoint about the benefits of ASID Membership.

At La Roche College, IUP (Indiana University of Pennsylvania), Chatham University and Mercyhurst we had the opportunity to do a teamwork challenge. The students had a lot of fun stacking the red cups with just a rubberband and string - No Hands Allowed! The Art Institute of Pittsburgh had a joint Membership drive in conjunction with IIDA so unfortunately did not have time for the activity.

We also debuted a wonderful video put together by Anna Dinger, that showcased Designers, Students and IP members telling why to join ASID! The video is available on the ASID PA West Facebook page if interested in viewing.

Board training was also conducted with three of the five campus schools this fall. The goal of our student boards is to start creating a strategic plan for themselves just as the professional board does, however on a much smaller scale.

Thank you to the professionals that visited the schools: Brain Fee, Caroline Varanesevic, Nancy Drew, Kayla Rose, Kelsey Ziegler, Lori Claus, Ashley Mikulan and Windy J. Neff. We'd also like to say a very special thank you to all the faculty and professional liaisons helping to make our student chapters strong.

This spring we will be making the round to all the schools again to conduct a FUN design challenge! If professionals are interested in attending please contact [asidpawest@gmail.com](mailto:asidpawest@gmail.com).



La Roche Students



Indiana University of Pennsylvania Students



Mercyhurst Students



Chatham Students